

RELEASE NOTE

TRANSIENT PQ REPORT

V 1.1

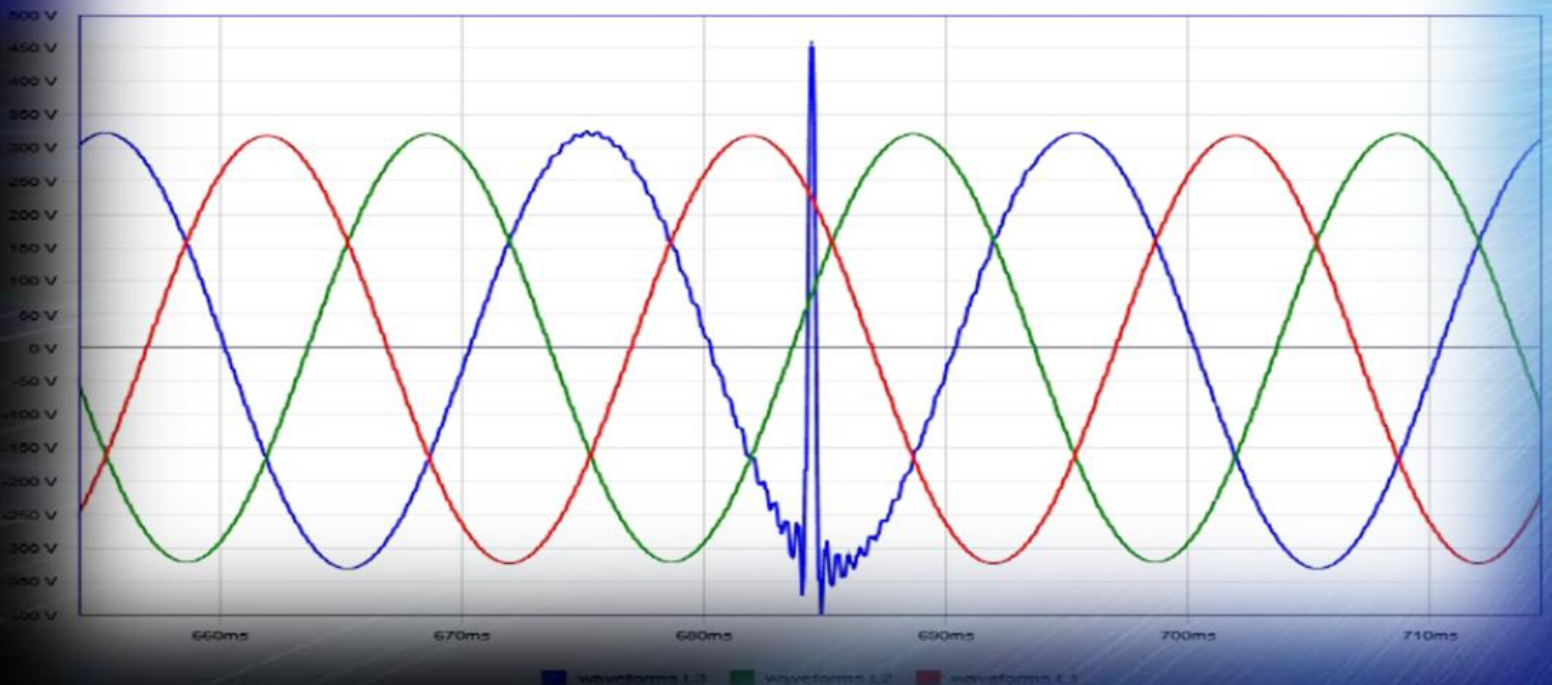


BLACKBOX

Transient PQ Report

the most significant detected events (by deviation):

Source	Phase	Start time	Duration	Deviation (%)
le_153@Alex the lion king	L3	17/01/2013 01:30:11.684108	00:00:00.0005255	228.15



Date: Feb 2013
Document Version: V1.1
SMX-2337-0100

TABLE OF CONTENTS

IMPORTANT NOTIFICATIONS 3

KNOWN ISSUE..... 3

1 STOP DOWNLOAD SHOP 3

INSTALL THE TRANSIENT PQ REPORT 3

Important Notifications



PQSCADA 4.2 & later versions includes a new Report Package. The Transient PQ Report forms part this Report Package & you may install it after you have installed or upgraded to PQSCADA 4.2 & later versions. All tasks related to report tasks, therefore needs to be reconfigured from anew.

Known Issue

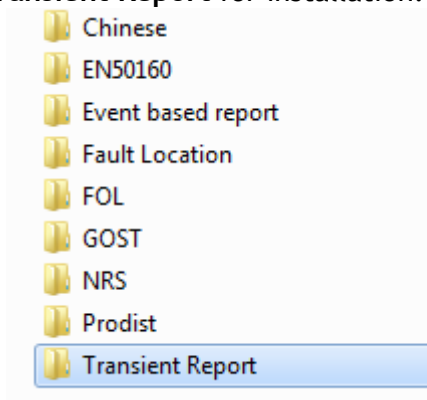
- The report does not support daylight savings time.

1 Stop Download Shop

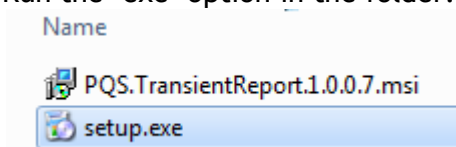
- [Transient PQ Report](#)

Install The Transient PQ Report

- After you have downloaded the [Report Module from Elspec's Website](#), select the **Transient Report** for installation:



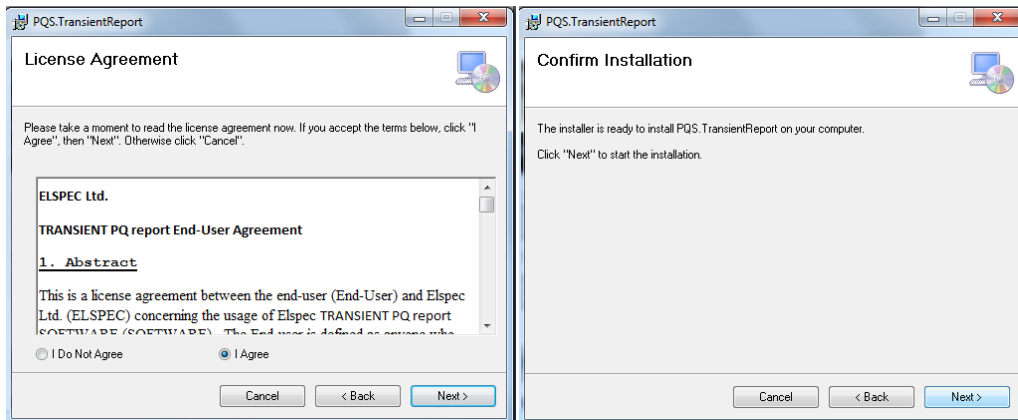
- Run the "exe" option in the folder:



- The Welcome Screen of the installation guide will now open:



- Select the button to commence the installation process
- Accept the license agreement at “I Agree” & select the button until you confirm the installation:



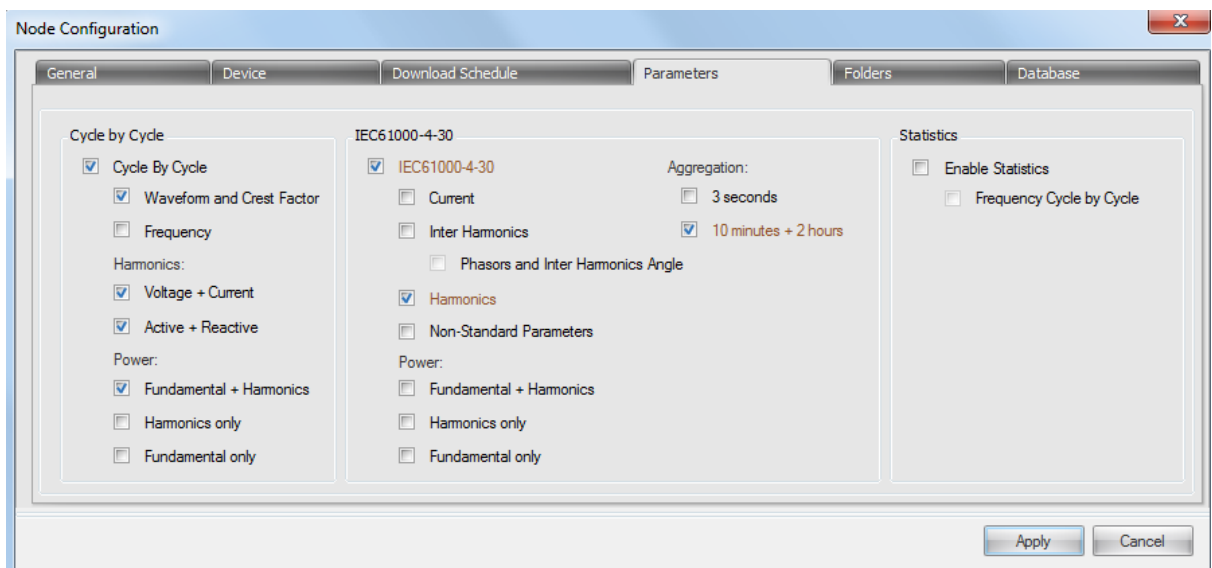
Do not change any of the default settings unless instructed to do so by Elspec software support

- Select the button in order to complete the installation

IMPORTANT! CONFIGURE PQ PARAMETERS IN YOUR PQSCADA

In order for the Report to calculate all the applicable parameters, ensure that you have configured the Node in the PQSCADA accordingly

- As per the PQSCADA Help Wizard “F1” procedure, select Components ➔ Node ➔ Configuration ➔ Parameters
- Select the applicable Parameters:
 - (a) Cycle By Cycle: Waveform & Crest Factor
Harmonics - Voltage & Current; Active & Reactive
Power - Fundamental & Harmonics
 - (b) IEC61000-4-30: Harmonics
Aggregation - 10 minutes & 2 hours:

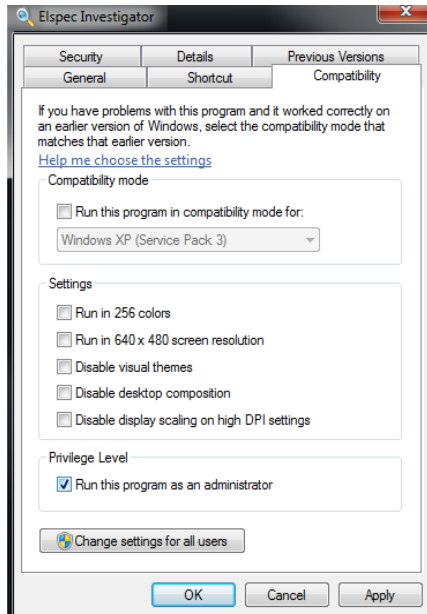


IMPORTANT! UPDATE THE INVESTIGATOR TO PRODUCE THE REPORT

As the PQReports are installed independently, you will need to configure the Investigator Application in order to produce the reports:

- Run the Investigator in **Administration Mode**:
 - (a) Right-click on the **Investigator Icon** on your desktop ➔ select **Properties** ➔ **Compatibility Tab**;
 - (b) In the Privilege Level select the option **Run this program as an Administrator**

➔  ➔  buttons:



- (c) Open the Investigator, select **Settings** ➔ **Folder** ➔ **Configure Folder Path**