

RELEASE NOTE

FAULT LOCATION REPORT

V 1.1



BLACKBOX FAULT LOCATION REPORT



0.3213 KM

0.6787 KM



BLACKBOX

Main

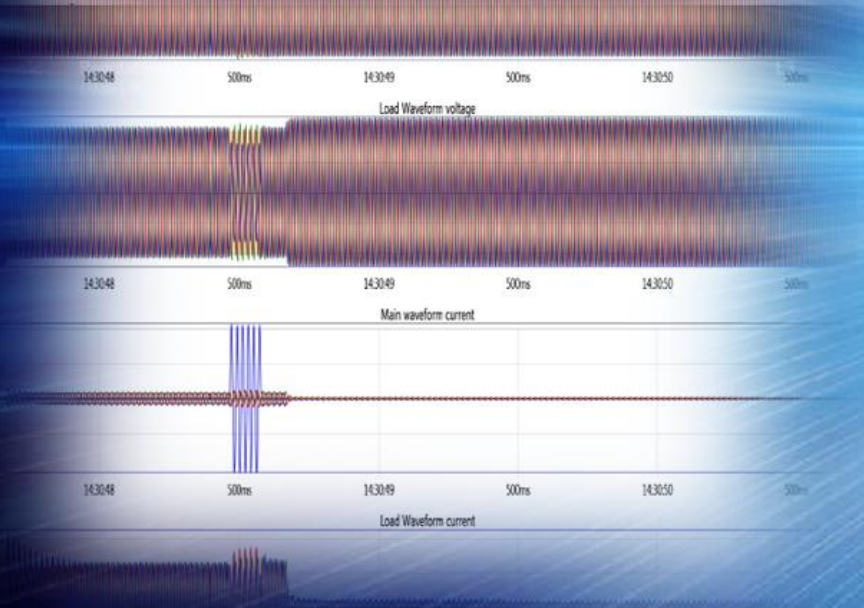
- 1 KM -

Main Waveform voltage

Load

Estimated Distance Is 0.3213 K.M

Network company ensures that the individual Harmonic Voltages do not exceed following values in measured as 10 minute Average values.



Date: 14 June 2012
Document Version: V1.1
SMX-2332-0100

TABLE OF CONTENTS

IMPORTANT NOTIFICATIONS	3
KNOWN ISSUE.....	3
1 STOP DOWNLOAD SHOP	3
INSTALL THE FAULT LOCATION REPORT	3

Important Notifications



PQSCADA 4.2 & later versions includes a new Report Package. The Fault Location Report forms part this Report Package & you may install it after you have installed or upgraded to PQSCADA 4.2 & later versions. All tasks related to report tasks, therefore needs to be reconfigured from anew.

Known Issue

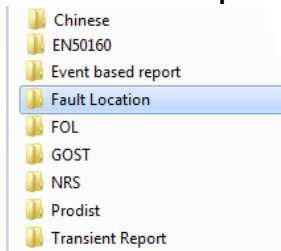
- The report does not support daylight savings time.

1 Stop Download Shop

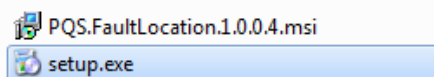
- [Fault Location Report](#)

Install The Fault Location Report

- After you have downloaded the [Report Module from Elspec's Website](#), select the **Fault Location Report** for installation:




- Run the "exe" option in the folder:

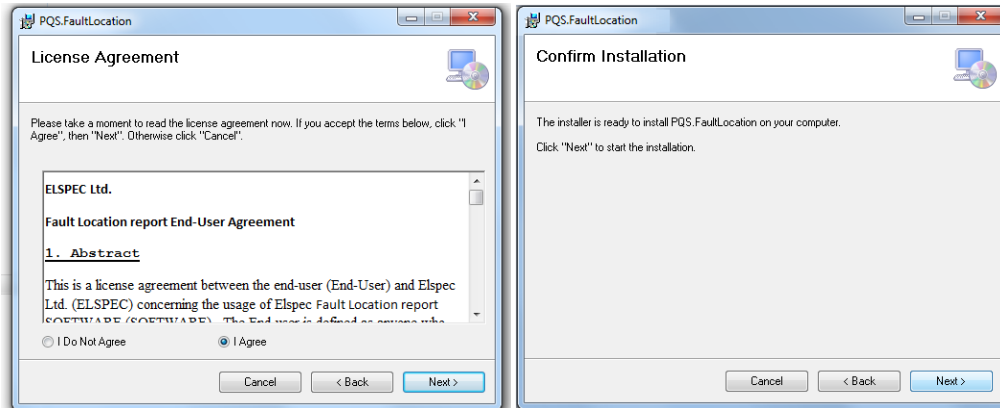


The Welcome Screen of the installation guide will now open:




- Select the  button to commence the installation process

- Accept the license agreement at “I Agree” & select the  button until you confirm the installation:



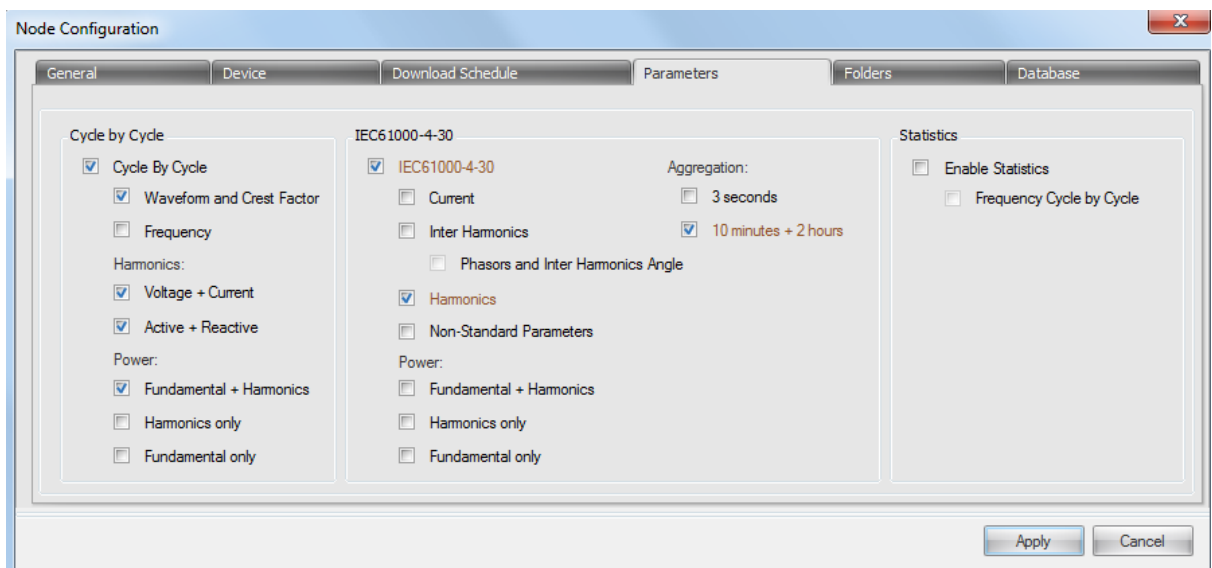
Do not change any of the default settings unless instructed to do so by Elspec software support

- Select the  button in order to complete the installation

IMPORTANT! CONFIGURE PQ PARAMETERS IN YOUR PQSCADA

In order for the Report to calculate all the applicable parameters, ensure that you have configured the Node in the PQSCADA accordingly

- As per the PQSCADA Help Wizard “F1” procedure, select Components ➔ Node ➔ Configuration ➔ Parameters
- Select the applicable Parameters:
 - (a) Cycle By Cycle: Waveform & Crest Factor
 Harmonics - Voltage & Current; Active & Reactive
 Power - Fundamental & Harmonics
 - (b) IEC61000-4-30: Harmonics
 Aggregation - 10 minutes & 2 hours:

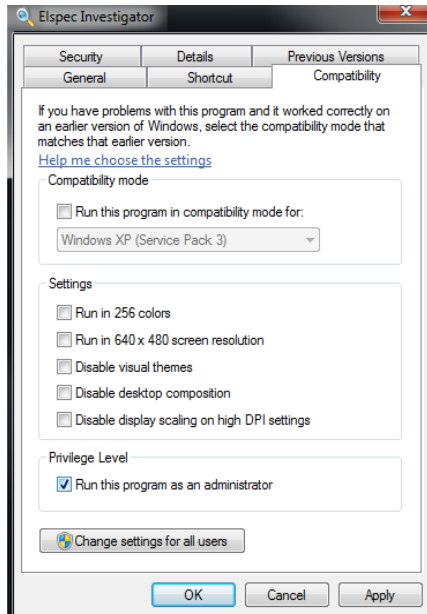


IMPORTANT! UPDATE THE INVESTIGATOR TO PRODUCE THE REPORT

As the PQReports are installed independently, you will need to configure the Investigator Application in order to produce the reports:

- Run the Investigator in **Administration Mode**:
 - (a) Right-click on the **Investigator Icon** on your desktop ➔ select **Properties** ➔ **Compatibility Tab**;
 - (b) In the Privilege Level select the option **Run this program as an Administrator**

➔  ➔  buttons:



- (c) Open the Investigator, select **Settings** ➔ **Folder** ➔ **Configure Folder Path**