

RELEASE NOTE

EN50160 PQ REPORT

V1.1



BLACKBOX
EN50160 PQ Report

Flicker Severity

The Network company shall ensure that PLT Flicker does not exceed 1.0 during 95% of week.

| Parameter | Channel/Phase | Regulation Max 95% | Measured Max 95% | Result |
|-----------|---------------|--------------------|------------------|--------|
| PLT | L1 | 1 | 0.75 | Pass |
| PLT | L2 | 1 | 0.69 | Pass |
| PLT | L3 | 1 | | |

Individual Harmonic Voltages

The Network company ensures that the individual Harmonic Voltages do not exceed following values in the table, measured as 10 minute average values.

| Harmonic Order | Regulation (Max) % | Measured of Max (%) | | | Result | | |
|----------------|--------------------|---------------------|----|----|--------|------|------|
| | | L1 | L2 | L3 | L1 | L2 | L3 |
| 2 | 2% | 0% | 0% | 0% | Pass | Pass | Pass |
| 3 | 5% | 0% | 0% | 0% | Pass | Pass | Pass |
| 4 | 1% | 0% | 0% | 0% | Pass | Pass | Pass |
| 5 | 6% | 0% | 0% | 0% | Pass | Pass | Pass |
| 6 | 0.5% | 0% | 0% | 0% | Pass | Pass | Pass |
| 7 | 5% | 0% | 0% | 0% | Pass | Pass | Pass |
| 8 | 0.5% | 0% | 0% | 0% | Pass | Pass | Pass |
| 9 | 1.5% | 0% | 0% | 0% | Pass | Pass | Pass |
| 10 | 0.5% | 0% | 0% | 0% | Pass | Pass | Pass |
| 11 | 3.5% | 0% | 0% | 0% | Pass | Pass | Pass |
| 12 | 0.5% | 0% | 0% | 0% | Pass | Pass | Pass |
| 13 | 3% | 0% | 0% | 0% | Pass | Pass | Pass |
| 14 | 0.5% | 0% | 0% | 0% | Pass | Pass | Pass |
| 15 | 0.5% | 0% | 0% | 0% | Pass | Pass | Pass |
| 16 | 0.5% | 0% | 0% | 0% | Pass | Pass | Pass |
| 17 | 2% | 0% | 0% | 0% | Pass | Pass | Pass |
| 18 | 0.5% | 0% | 0% | 0% | Pass | Pass | Pass |
| 19 | 1.5% | 0% | 0% | 0% | Pass | Pass | Pass |
| 20 | 0.5% | 0% | 0% | 0% | Pass | Pass | Pass |
| 21 | 0.5% | 0% | 0% | 0% | Pass | Pass | Pass |
| 22 | 0.5% | 0% | 0% | 0% | Pass | Pass | Pass |
| 23 | 1.5% | 0% | 0% | 0% | Pass | Pass | Pass |
| 24 | 0.5% | 0% | 0% | 0% | Pass | Pass | Pass |
| 25 | 1.5% | 0% | 0% | 0% | Pass | Pass | Pass |
| 26 | 2% | 0% | 0% | 0% | Pass | Pass | Pass |



Flicker - Mini/Max Values

Date: 14 June 2012
Document Version: V1.1
SMX-2329-0100

TABLE OF CONTENTS

IMPORTANT NOTIFICATIONS 3

KNOWN ISSUES 3

1 STOP DOWNLOAD SHOP 3

INSTALL THE EN50160 PQ REPORT 3

Important Notifications



PQSCADA 4.2 & later versions includes a new Report Package. The EN50160 PQ Report forms part this Report Package & you may install it after you have installed or upgraded to PQSCADA 4.2 & later versions. All tasks related to report tasks, therefore needs to be reconfigured from anew.

Known Issues

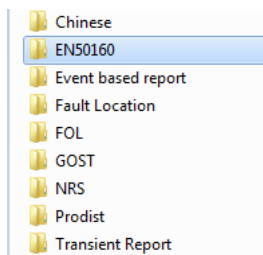
- The report is not translated to all languages.
- The report does not support daylight savings time.

1 Stop Download Shop

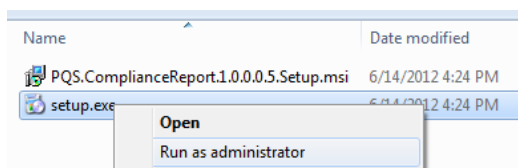
- EN50160 PQ Report

Install The EN50160 PQ Report

- After you have downloaded the [Report Module from Elspec's Website](#), select the **EN50160 Report** for installation:



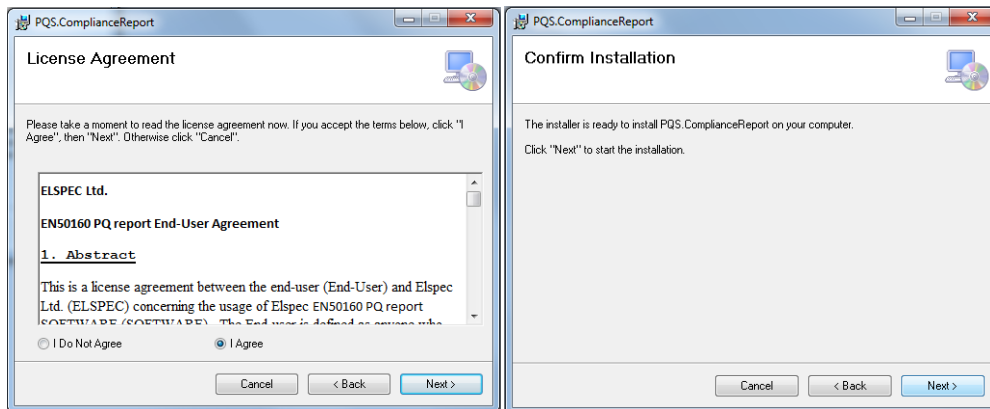
- Run the "exe" option in the folder:



The Welcome Screen of the installation guide will now open:



- Select the button to commence the installation process
- Accept the license agreement at “I Agree” & select the button until you confirm the installation:



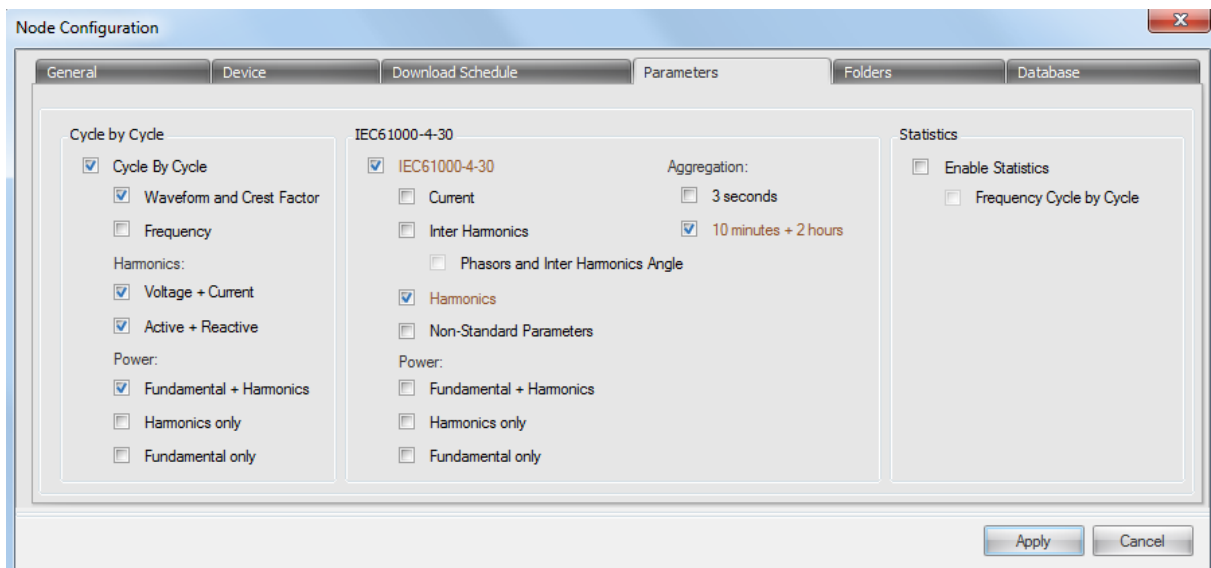
Do not change any of the default settings unless instructed to do so by Elspec software support

- Select the button in order to complete the installation

IMPORTANT! CONFIGURE PQ PARAMETERS IN YOUR PQSCADA

In order for the Report to calculate all the applicable parameters, ensure that you have configured the Node in the PQSCADA accordingly

- As per the PQSCADA Help Wizard “F1” procedure, select Components ➡ Node ➡ Configuration ➡ Parameters
- Select the applicable Parameters:
 - (a) Cycle By Cycle: Waveform & Crest Factor
 Harmonics - Voltage & Current; Active & Reactive
 Power - Fundamental & Harmonics
 - (b) IEC61000-4-30: Harmonics
 Aggregation - 10 minutes & 2 hours:

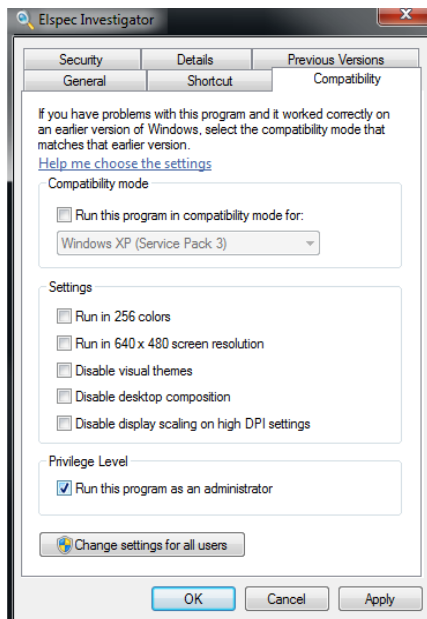


IMPORTANT! UPDATE THE INVESTIGATOR TO PRODUCE THE REPORT

As the PQReports are installed independently, you will need to configure the Investigator Application in order to produce the reports:

- Run the Investigator in **Administration Mode**:
 - (a) Right-click on the **Investigator Icon** on your desktop ➡ select **Properties** ➡ **Compatibility Tab**;
 - (b) In the Privilege Level select the option **Run this program as an Administrator**

➡  ➡  buttons:



- (c) Open the Investigator, select **Settings** ➡ **Folder** ➡ **Configure Folder Path**